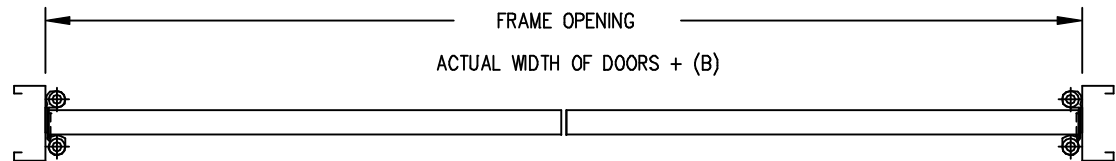
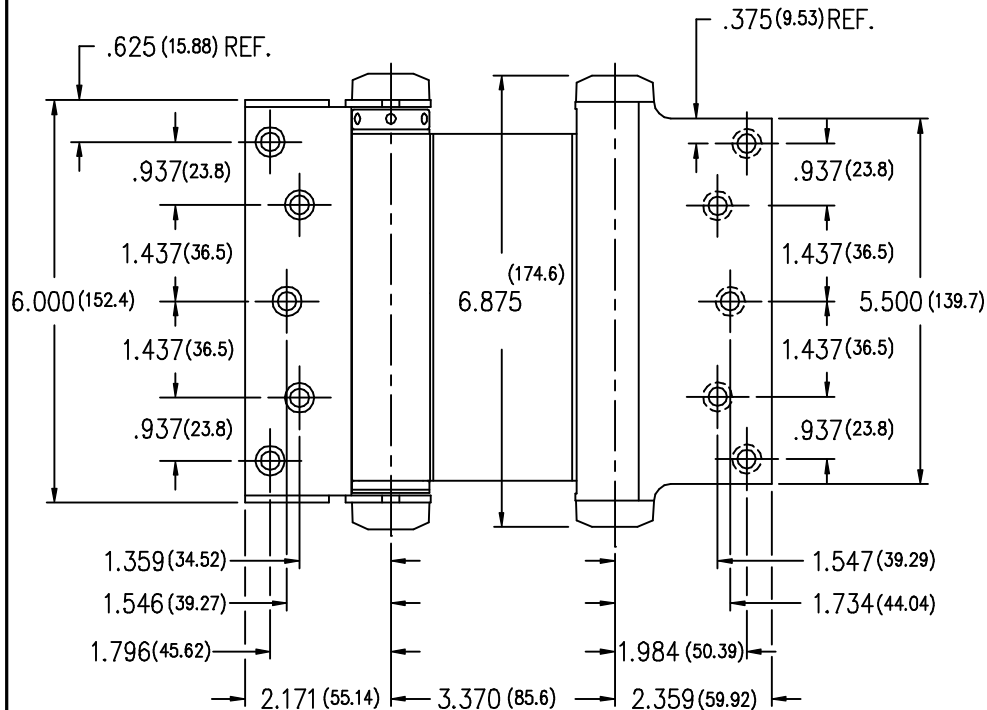
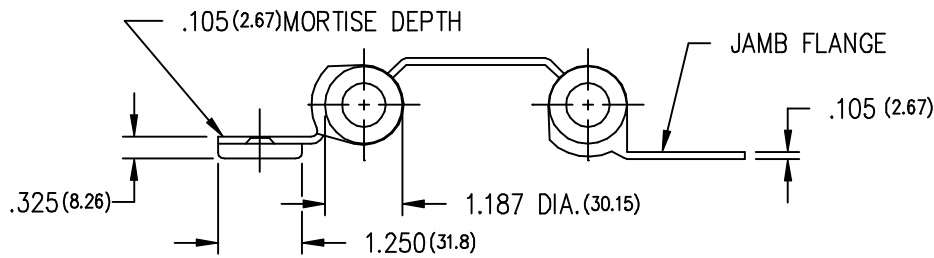


SINGLE DOOR



PAIR OF DOORS

THIS IS A CAD DRAWING...  
DO NOT REVISE MANUALLY.



VERIFY THAT DRAWING IS CURRENT PRIOR TO USING

FRAME SIZING INFORMATION

HINGE MOUNTING	(A)	(B)
DOOR FLANGE NOT MORTISED	1/2"	1 1/32"
DOOR FLANGE MORTISED	7/16"	13/16"

---NOTES---

- (1) DO NOT USE ON DOORS WITH HINGE EDGE BEVELED.
- (2) INVERT HINGES ON ONE DOOR OF A PAIR FOR PROPER CENTERING.
- (3) DIMENSIONS IN PARENTHESSES ARE MILLIMETERS.
- (4) WOOD SCREW 12 X 1 1/4".

**Bommer**

BOMMER INDUSTRIES, INC.  
LANDRUM, SC 29356  
MADE IN THE USA

3029-6  
DOUBLE ACTING SPRING HINGE

DRAWN BY : STEWART JACKSON	DATE	SCALE	DRAWING NUMBER
APPROVED BY :	15 JUL 98	NONE	071598-3029-6T
PLOT DATE : 15 JUL 98			